

Electromagnetic Flow Monitor *magphant*



Monitoring and measurement

- Flow monitoring with selectable limit values (relay output)
- Flow measurement via 4...20 mA current output

Safe operation

- Reliable monitoring (4 mA) even with empty piping
- EMC tested according to IEC
- Measuring system self-monitoring
- Integrated testing to check correct functioning of the electronics

Universal application

- One compact flow monitor for all applications
- Mounted in
 - Steel piping from DN 25
 - Plastic piping from DN 15

Simple operation

- Switchpoint setting via rotary switch
- Local potentiometer setting of full-scale value
- Can be set-up before installation

Endress + Hauser

Nothing beats know-how

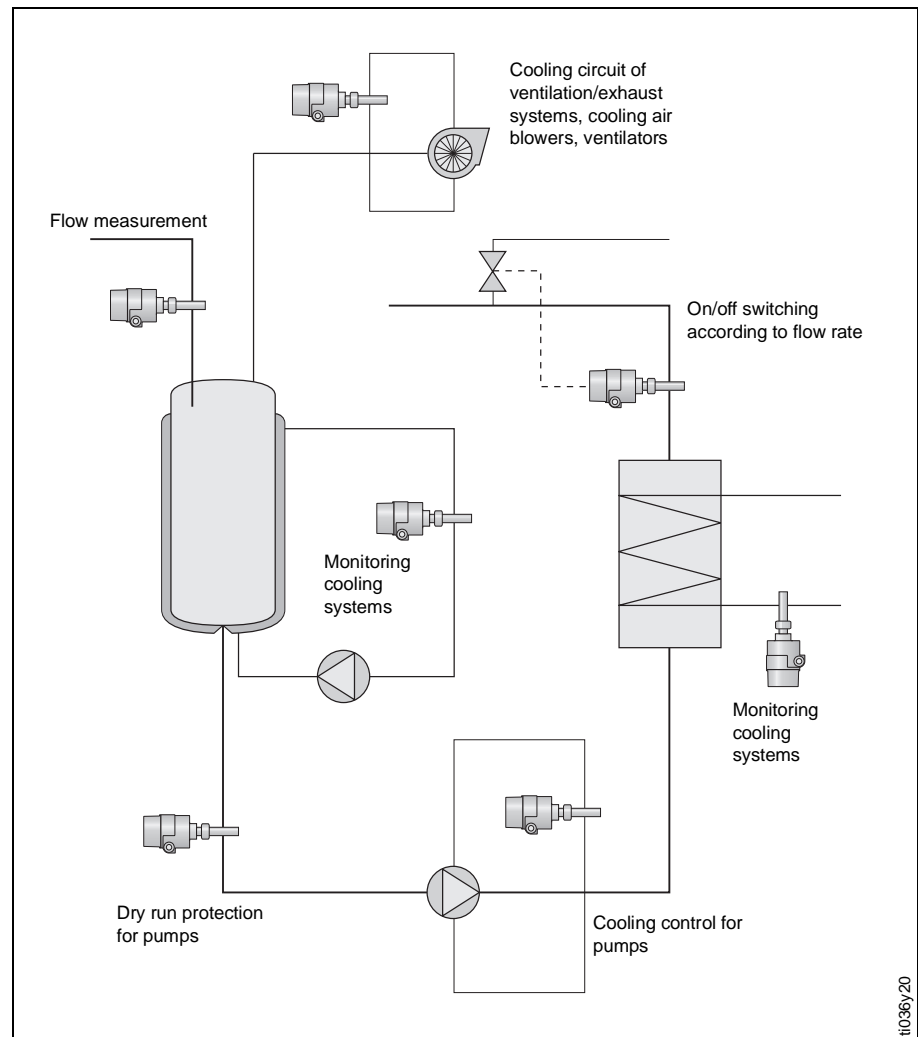


Magphant Measuring System

Areas of application

Flow information is often required to ensure a process is running correctly and that preset limit values are not exceeded. The Magphant flow monitor reliably provides the necessary informa-

tion on flow in your piping. The electromagnetic principle used determines the flow velocity of the conductive liquid at the tip of the sensor.



Application examples

Areas of application:

- Process plant construction
- Chemical industry
- Energy production
- Water treatment
- Beverage industry
- Dairy industry
- Metal production and processing
- Farming and horticulture

Applications:

- Dry run protection for pumps
- Flow monitoring
- On/off switching according to flowrate
- Control of cooling systems for pumps, turbines, compressors, heat exchangers
- Flow monitoring
- Monitoring pump function
- Monitoring coolant to bearings for turbines/generators in power plants
- Cooling circuits for transformers
- Status indication of valves in water distribution systems
- Blockage indication in pipes
- Filtration control
- Monitoring cleaning procedures
- Cooling systems in refrigeration plants
- Detecting breakdown of cooling systems for bearings and transmissions
- Control and monitoring of irrigation systems

广州晋合水处理设备有限公司



地 址：广东省广州市海珠区工业大道333号华新园区7幢218
电 话：020-88191905
传 真：020-61139917
邮 编：510300
邮 箱：jinhewater@jinhewater.com
网 址：<http://www.jinhewater.com>

Endress+Hauser 
People for Process Automation