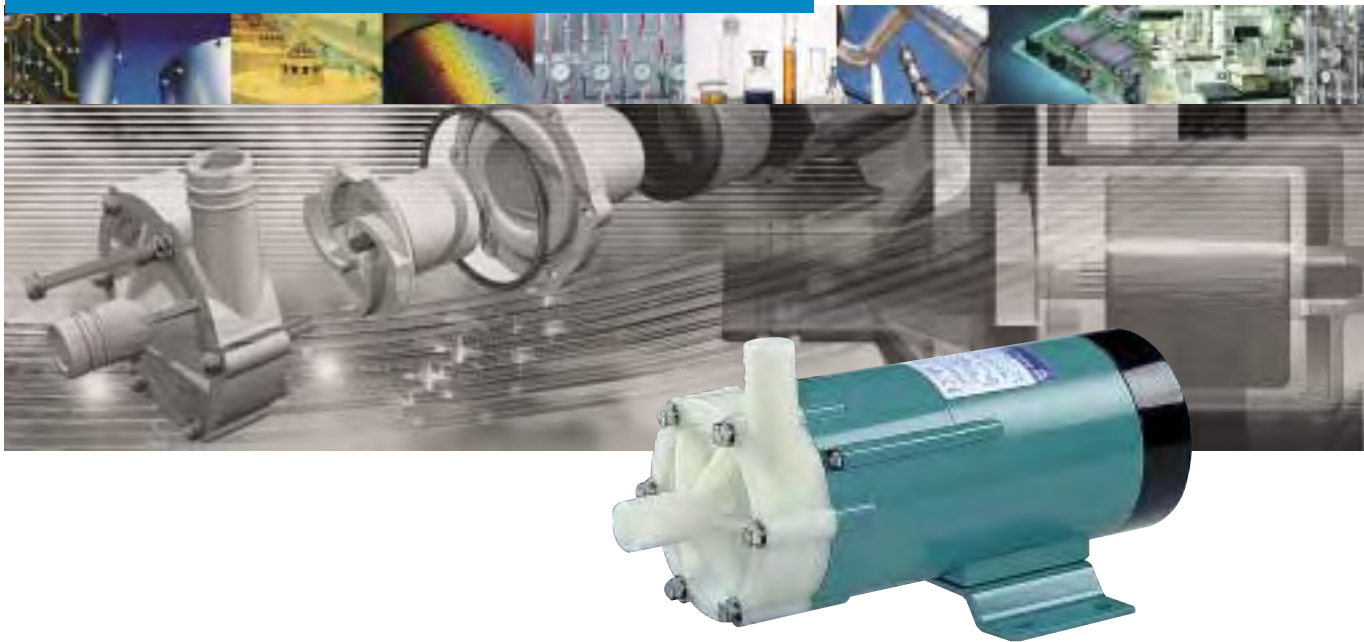
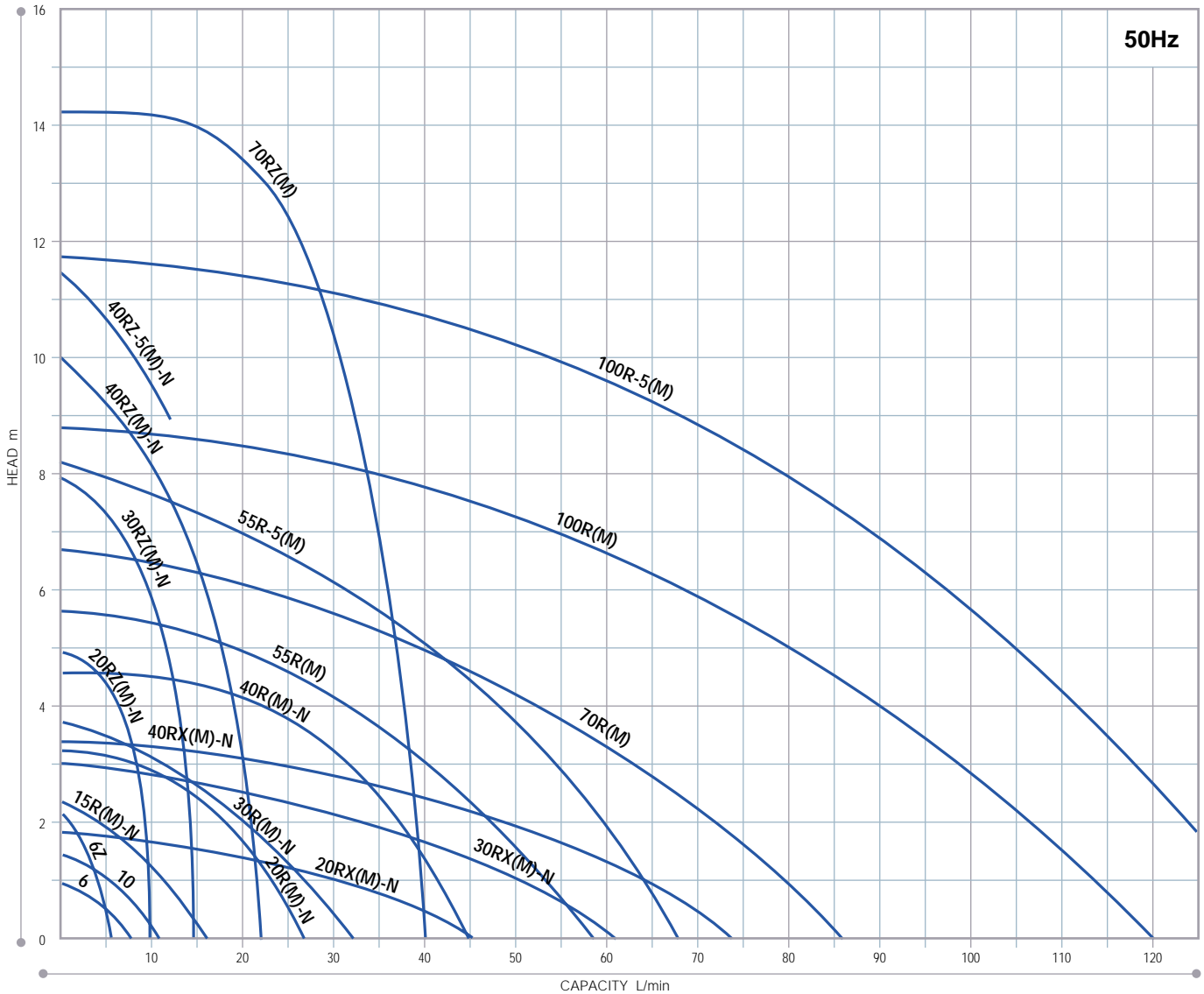


## Magnetic drive pumps MD series



## Performance curves



Note: Performance is based on pumping clear water at ambient temperature. Do not run pump with discharge valve closed because pump life may be shortened.  
MD-40RZ-N model makes water noise when used at head of 6 meters (50 Hz) below.

## Specifications

Model	Hose connection		Screwed connection		Max. Capacity L/min	Max. Head m	S.G.	Motor			Mass kg
	Inlet	Outlet	Inlet/Outlet	Union				Note	Output W	Input W	
MD-6	14mm	14mm	-	-	8.0	1.0	1.2	3	22	1	0.9
MD-6Z	14mm	14mm	-	-	5.5	2.1	1.1	3	24	1	0.9
MD-10	14mm	14mm	-	-	11	1.5	1.1	6	35	1	0.9
MD-15R(M)-N, 15RV-N	14mm	14mm	G 3/4	13mm	16	2.4	1.3	10	30	1	1.6
MD-20R(M)-N	18mm	17mm	G 3/4	16mm	27	3.1	1.1	20	45	1	2.0
MD-20RZ(M)-N, 20RZV(M)-N	17.5mm	17mm	G 3/4	13mm	10	4.9	1.1	20	45	1	2.0
MD-20RX(M)-N	26mm	26mm	G 1	20mm	46	1.8	1.3	20	45	1	2.0
MD-30R(M)-N, 30RV(M)-N	20mm	20mm	G 3/4	16mm	32	3.8	1.3	45	60	1	3.5
MD-30RZ(M)-N, 30RZV(M)-N	17.5mm	17mm	G 3/4	13mm	15	8.0	1.0	45	80	1	3.5
MD-30RX(M)-N	26mm	26mm	G 1	20mm	62	2.9	1.1	45	80	1	3.5
MD-40R(M)-N	20mm	20mm	G 3/4	16mm	45	4.6	1.1	65	95	1	3.9
MD-40RZ(M)-N	20mm	20mm	G 3/4	16mm	22	10	1.0	65	140	1	3.9
MD-40RZ-5(M)-N	20mm	20mm	G 3/4	16mm	11	11.5	1.0	65	140	1	3.9
MD-40RX(M)-N	26mm	26mm	G 1	20mm	75	3.3	1.1	65	85	1	3.9
MD-55R(M)	26mm	26mm	G 1	20mm	60	5.6	1.2	90	130	1	5.4
MD-55R-5(M)	26mm	26mm	G 1	20mm	70	8.2	1.2	90	170	1	5.4
MD-70R(M), 70RV(M)	26mm	26mm	G 1	20mm	86	6.7	1.0	150	210	1 or 3	6.0
MD-70RZ(M), 70RZV(M)	20mm	20mm	G 3/4	16mm	40	14.3	1.0	180	265	1 or 3	6.0
MD-100R(M)	26mm	26mm	G 1	20mm	120	8.6	1.2	260	245	1 or 3	8.5
MD-100R-5(M)	26mm	26mm	G 1	20mm	135	11.7	1.1	260	365	1 or 3	8.5

• Temperature range: 0 - 80°C • Ambient temperature : 0 to 40°C • Limit of viscosity: 30mPa·s (at specific gravity 1) • Slurries shorten pump life.

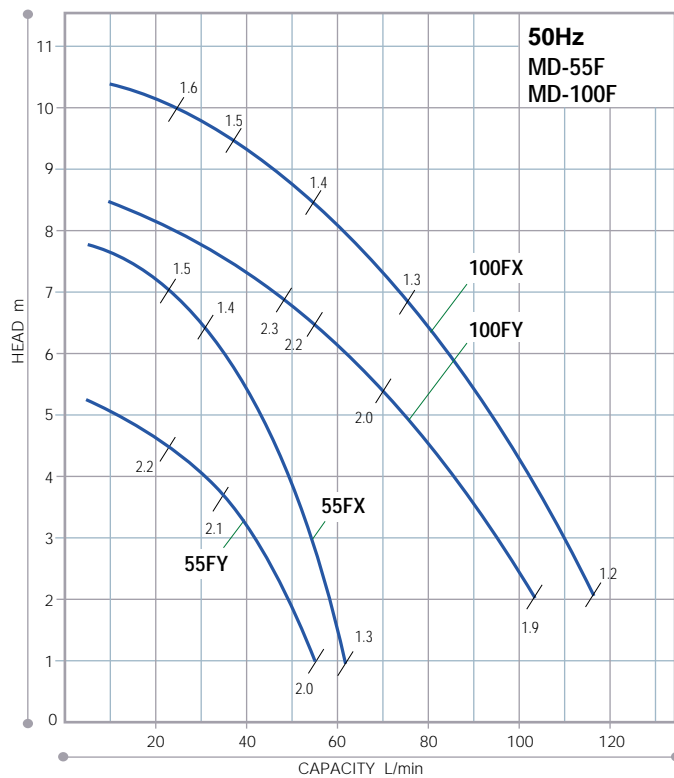
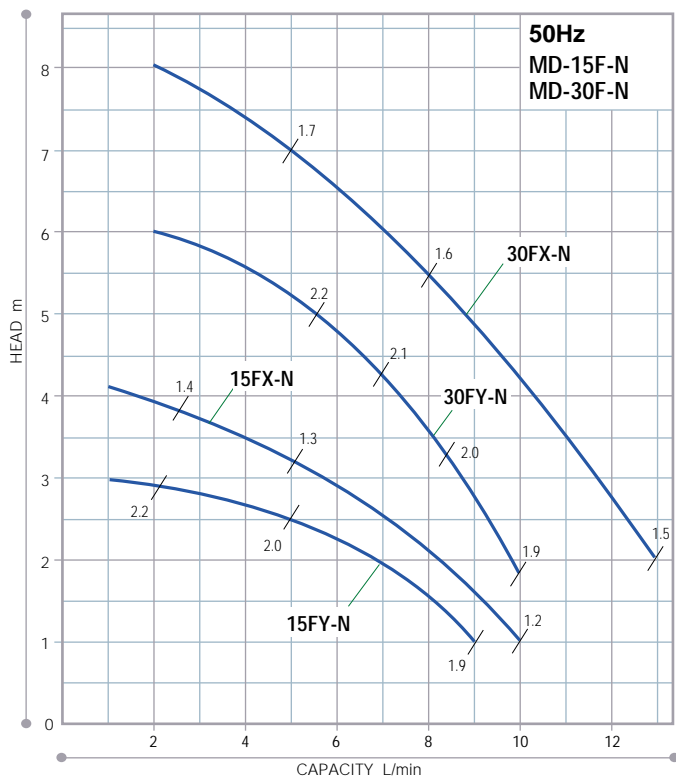
Note: Size of union is nominal dia. of mated PVC pipe. Allowable temperature range is 0 to 55°C.

• Allowable liquid temperature may depend on pumped liquid and operating condition such as heat cycles or so. Please contact us for details.

• MD-40RZ-5(M)-N, 55R-5(M) and 100R-5(M) models are exclusive use for 50 cycle frequency.

## MD-F

## Performance curves



Note: Performance is based on pumping clear water at ambient temperature. Do not run pump with discharge valve closed because pump life may be shortened.  
Figures on the performance curves shows the specific gravity limit at viscosity of 1mPa•s.

## Specifications

50Hz

Model	Type of Impeller	Screwed connected Inlet/Outlet	Max. Capacity L/min	Max. Head m	S.G.	Motor			Mass kg
						Output W	Input W	Phase	
MD-15F-N	X	NPT1/2	10	4.1	1.2	10	38	1	1.8
	Y		9	3	1.9	10	30		
MD-30F-N	X	NPT1/2	13	8	1.5	45	70	1	3.5
	Y		10	6	1.9				
MD-55F	X	R1	65	7.8	1.3	90	170	1	5.4
	Y		60	5.4	2.0	90	130		
MD-100F	X	R1	125	10.5	1.2	260	375	1 or 3	8.5
	Y		115	8.5	2.0	260	260		

• Temperature range: 0 - 80°C • Ambient temperature : 0 to 40°C • Limit of viscosity: 30mPa•s (at specific gravity 1) • Slurries shorten pump life.  
• Allowable liquid temperature may depend on pumped liquid and operating condition such as heat cycles or so. Please contact us for details.

## Dimensions

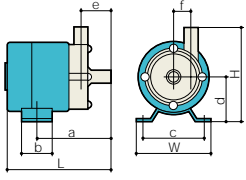
Size of MD-M(Screwed connection type) is shown in ( ).

MD

MD-V

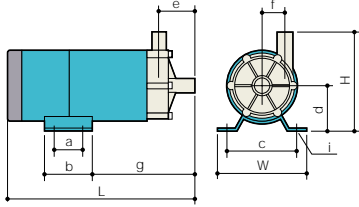
### MD-6/6Z/10

Illustration shows MD-6



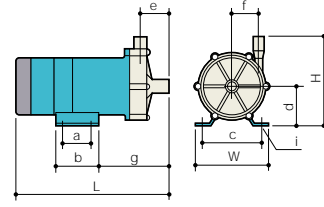
### MD-15R(M)-N to 40R(M)-N

Illustration shows MD-30R-N



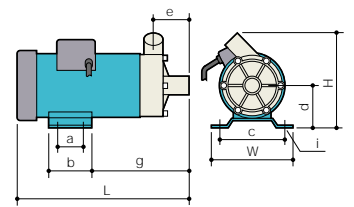
### MD-20RZ(M)-N to 70RZ(M)-N

Illustration shows MD-20RZ-N



### MD-20RX(M)-N to 40RX(M)-N

Illustration shows MD-40RX-N



Model	W	H	L	a	b	c	d	e	f	g	i
MD-6	74	92	104	73	30	60	45	31	17	-	2 - $\phi$ 5.4
MD-6Z											
MD-10											
MD-15R(M)-N	95	109 (114)	180 (179)	-	50	68	55	39	22	92	2 - $\phi$ 5.6
MD-20R(M)-N	85	115 (116)	209 (203)	30	50	68	55	39 (33)	29	106.5 (101)	4 - 5.7 X 8
MD-30R(M)-N	120	130	248	40	64	100	60	48	31	137	4 - $\phi$ 9
MD-40R(M)-N			250								

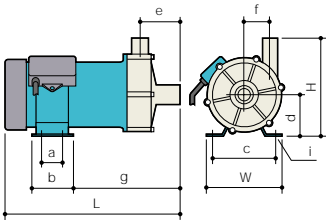
Model	W	H	L	a	b	c	d	e	f	g	i		
MD-20RZ(M)-N	85	125	211	30	50	68	55	40	39	109	4 - 5.7 X 8		
MD-30RZ(M)-N	120	130	230	40	64	100	60			120			
MD-40RZ(M)-N								150	241	39	45	128	4 - $\phi$ 9
MD-40RZ-5(M)-N								130	165	247	40	60	
MD-70RZ(M)	85	130 (132)	220	30	50	68	55	47	-	118	4 - 5.7 X 8		
MD-20RX(M)-N	120	137 (140)	254	40	64	100	60	50		143	4 - $\phi$ 9		
MD-30RX(M)-N													
MD-40RX(M)-N	137 (141)	256											

MD

MD-V

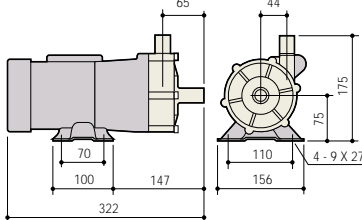
### MD-55R(M) to 70R(M)

Illustration shows MD-55R



### MD-100R(M), 100R-5(M)

Illustration shows MD-100R

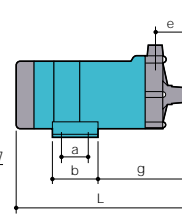


Model	W	H	L	a	b	c	d	e	f	g	i
MD-55R(M)	120	155	274	40	64	100	65	62	40	167	4 - $\phi$ 9
MD-55R-5(M)								(61)			
MD-70R(M)	130	155	258	40	60	110	65	53	43	149	4 - 7 X 11

MD-F

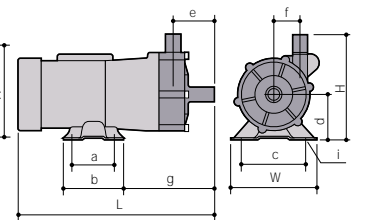
### MD-15F-N, 30F-N

Illustration shows MD-15F-N



### MD-55F, MD-100F

Illustration shows MD-100F



Model	W	H	L	a	b	c	d	e	f	g	i
MD-15F-N	95	120	186	-	50	68	55	34	29	99	2 - $\phi$ 5.6
MD-30F-N	120	130	231	40	64	100	60	39	39	120	4 - $\phi$ 9
MD-55F											
MD-100F	156	175	320	70	100	110	75	63	43	145	4 - 9 X 27

### MD-55R-(5)(M), 70R(V)(Z)(M), 100R-(5)(M) and MD-55F/100F

Available with IEC frame motors



This type of unit allows the pumps to be supplied with numerous motor options.

### MD-6Z-D2 (DC24V type)

Capable of flow adjustment by changing power supply voltage (and allows the user to easily comply with international standards such as CE, UL and CSA.)



Max. discharge capacity: 6 l/min.  
Max. discharge head: 2.7 m  
Temperature range: 0 to 50 °C  
Supplied power: DC8V to 24V